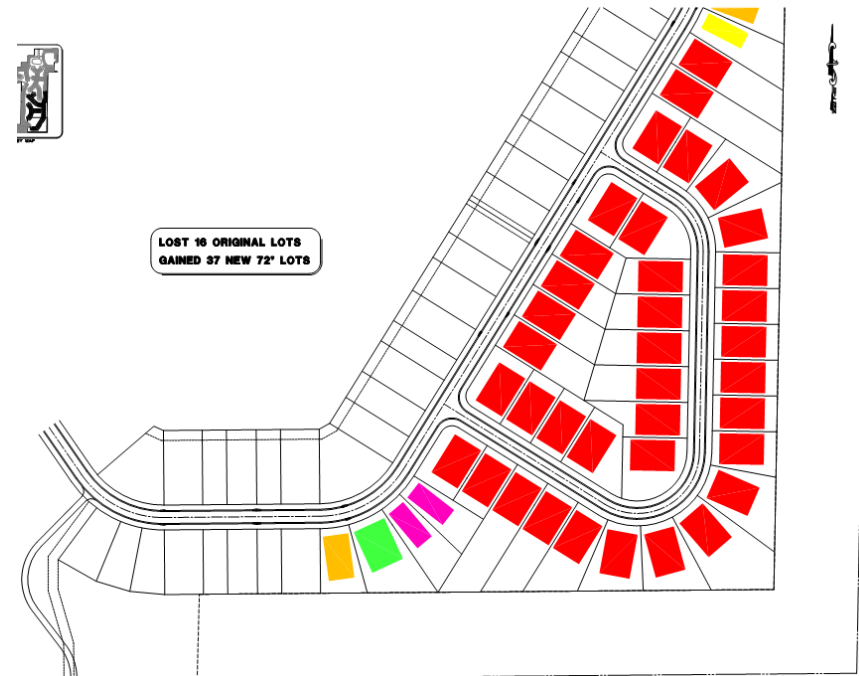
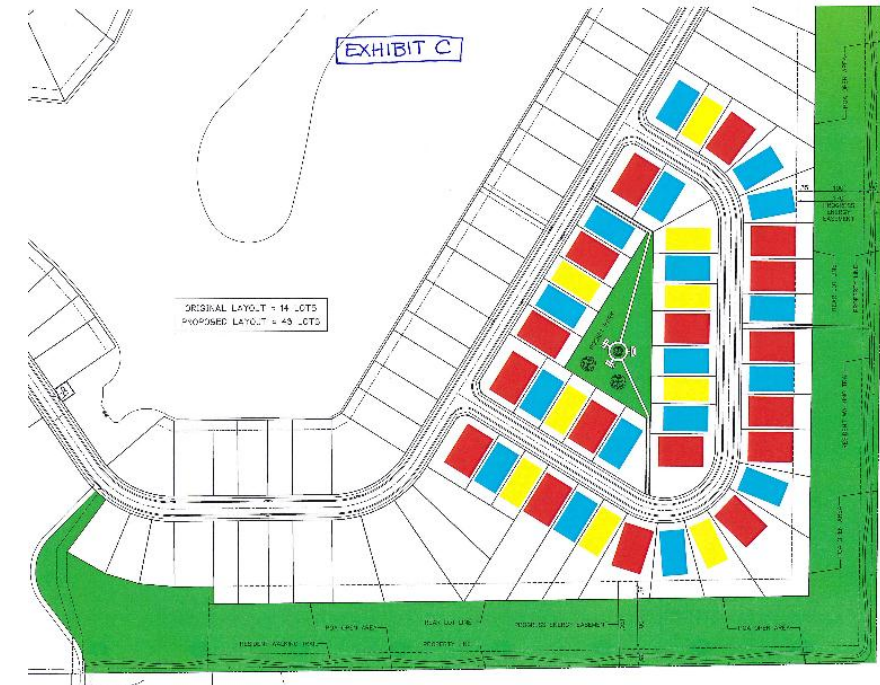


SOUTHEAST AREA

MEDALLION INITIAL REQUEST



PUD TEAM RECOMMENDATION



PRINGLE PRELIMINARY PLAN



WHAT IS THE BENEFIT?

- 29 Added lots providing:
 - \$29,000 added Developer contribution for amenities
 - ~\$75,000 added POA gross income per year
 - ~\$52,000 added POA net income per year
- Pocket Park with walking access
- Varied lot sizes, many with deeper lots
- Access to Bike / Walking Trail in SE perimeter green space
- Increased passive use of power line easement area